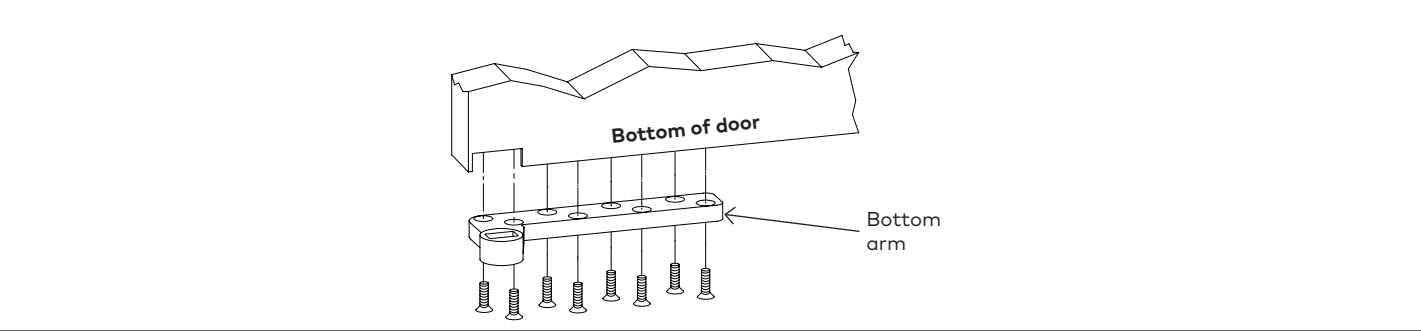


Installation Instructions

3/4" Offset Lead Lined Bottom Arm For use with 75343

1.1 Install bottom arm

Fig. 1

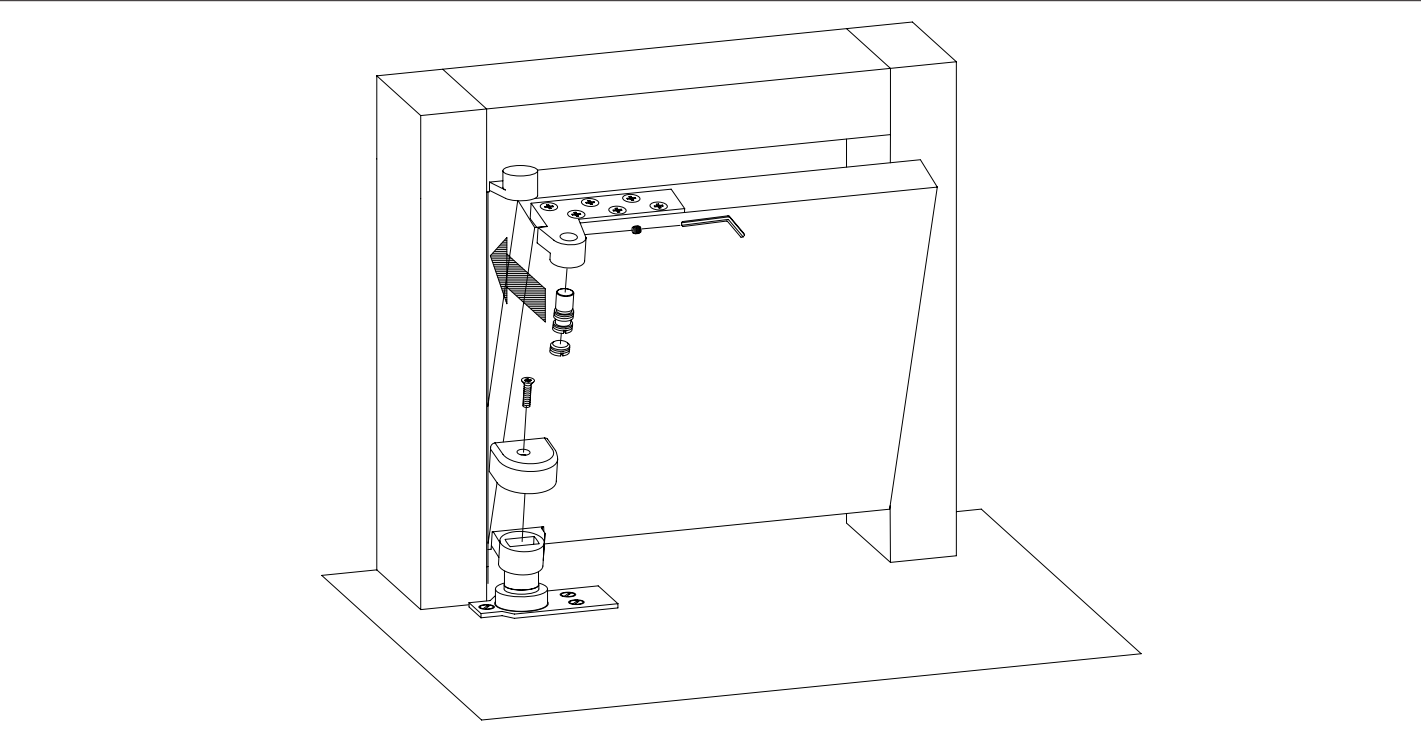


1.1.1 Prepare door according to template.

1.1.2 Install bottom arm.

1.2 Install door

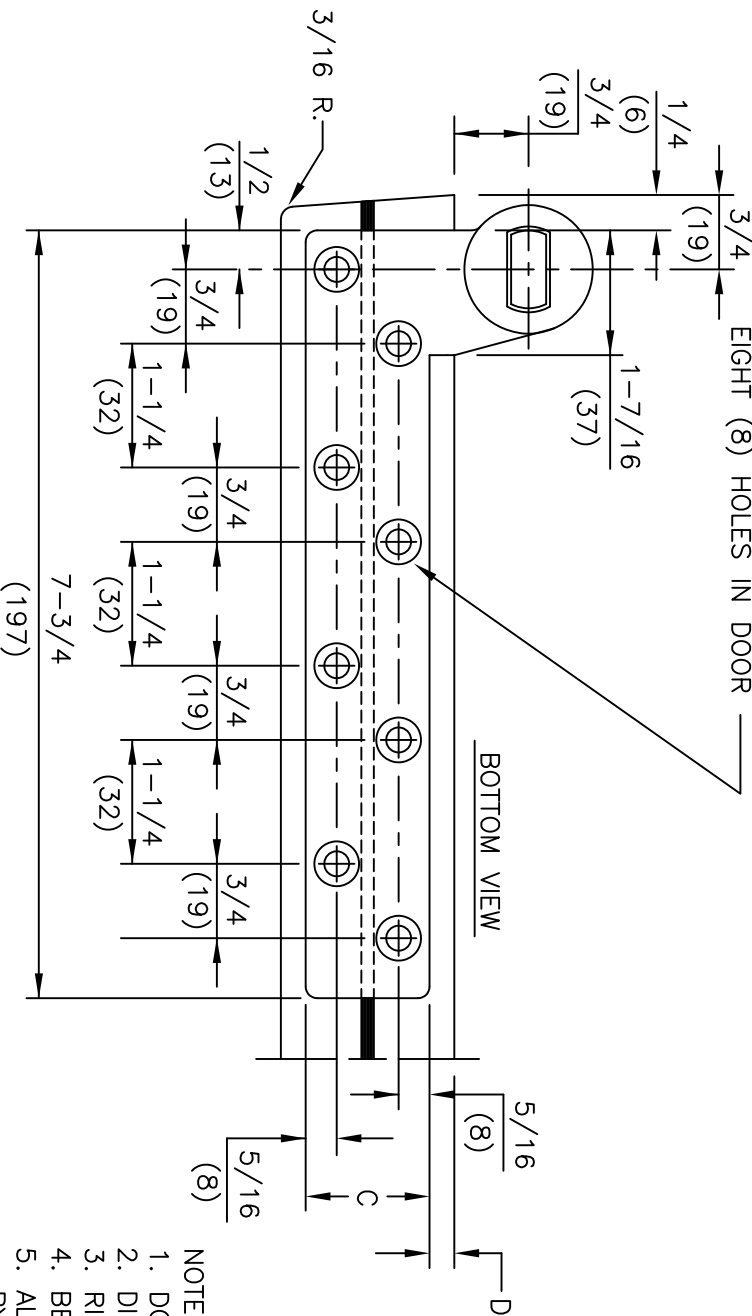
Fig. 2



- 1.2.1 With door parallel to frame, place bottom arm onto floor bearing.
- 1.2.2 Align door and frame portions of top pivot.
- 1.2.3 Install pivot pin.

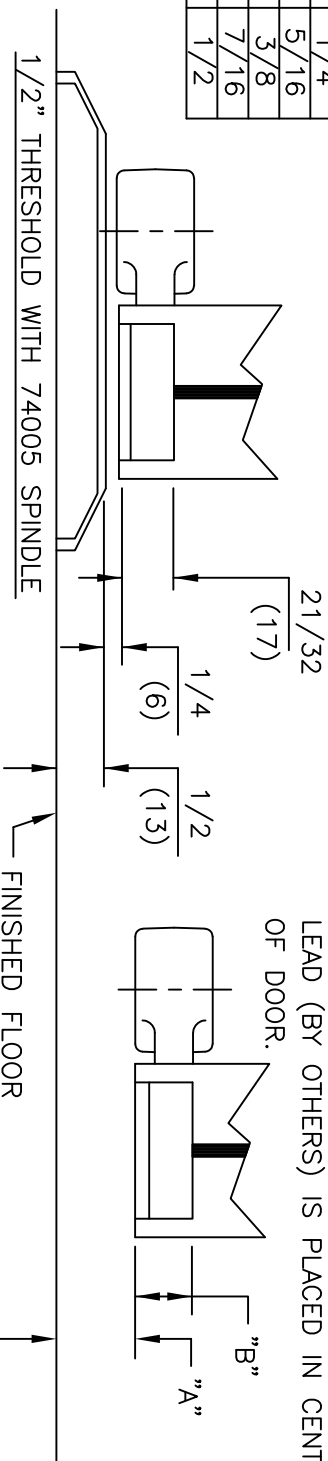
- 1.2.4 Install set screw.
- 1.2.5 Install cover cap.
- 1.2.6 Install cover over bottom arm with screw provided.

FOR 1/4-20 MACHINE SCREWS USE No.7 DRILL
 FOR No.14 WOOD SCREWS USE 5/32" DRILL
 EIGHT (8) HOLES IN DOOR



SPINDLE EXT.	"A" CLEARANCE	"B" MORTISE DEPTH
74003	3/8"	25/32"
74003	9/16"	19/32"
STD.74005	3/4"	19/32"
74007	7/8"	19/32"
74010	1"	19/32"
74012	1-1/16"	19/32"
74015	1-1/8"	19/32"
74020	1-3/8"	19/32"
74025	1-9/16"	19/32"
74030	1-3/4"	19/32"

DOOR THICKNESS	DIM "C"	DIM "D"
1-3/4"	1-1/4"	1/4"
2"	1-3/8"	5/16"
2-1/4"	1-1/2"	3/8"
2-1/2"	1-5/8"	7/16"
3"	2"	1/2"



- NOTES
1. DO NOT SCALE DRAWING.
 2. DIMENSIONS ARE IN INCHES/(MM).
 3. RIGHT HAND DOOR SHOWN.
 4. BEVEL HEEL EDGE OF DOOR 1/8" IN 2".
 5. ALL NECESSARY REINFORCEMENT FOR ARM BY OTHERS.
 6. FOR DOOR THICKNESS NOT LISTED USE NEXT SIZE NARROWER ARM.
 7. TEMPLATE BASED ON THE ASSUMPTION THAT LEAD (BY OTHERS) IS PLACED IN CENTER OF DOOR.

ITEM No. 75343, 75343-2, 75343-2 1/4, 75343-2 1/2, 75343-3
 3/4" OFFSET HEAVY DUTY BOTTOM ARM FOR LEAD LINED OR EXTRA HEAVY DOORS
 FOR NON-FIRE OR 3HR. RATED DOORS
 FOR USE WITH 7471HD FLOOR BEARING



dormakaba USA, INC.
 800 523 8483